

Building stronger relationships to safeguard children

Relational Practice is an approach that strives to build and maintain meaningful connections and strong relationships with parents, to help safeguard children. This approach should influence a school's ethos, systems, policies and everyday practice. It involves:



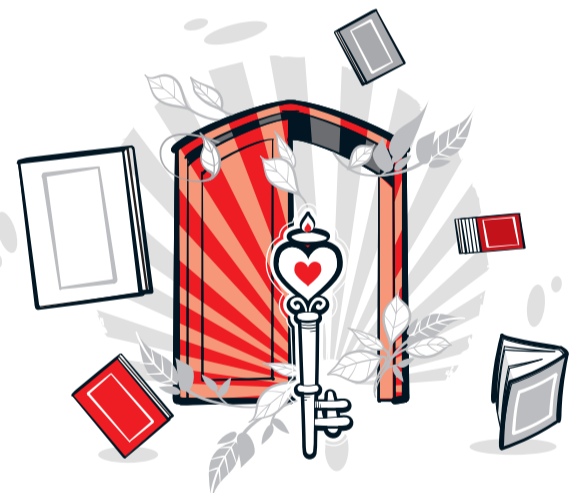
Empathy

Understanding (not necessarily agreement) of another person's thoughts or feelings in a given situation from their own perspective



Curiosity

Genuinely wanting to learn more about the challenges and strengths of families.



Authenticity

Staying true to your own personality, values, and spirit, including at times being vulnerable.



Unconditional positive regard

Genuine respect for someone with all their flaws and strengths. Avoiding judgement.



Join us in fostering supportive relationships

Let's make a difference together to ensure the safety and well-being of children. safeguarded.lgfl.net