

Keeping Children Safe in Education 2025

- overview of proposed changes for DSLs

<https://www.gov.uk/government/publications/keeping-children-safe-in-education--2>

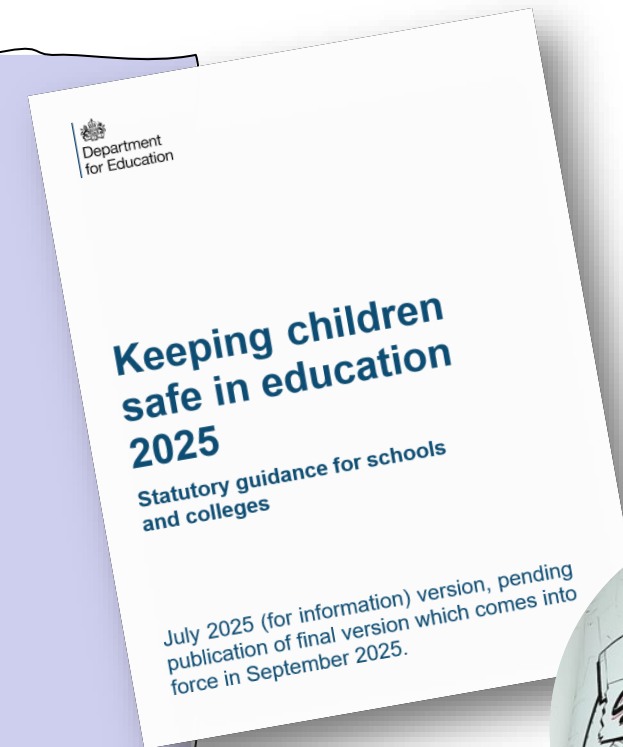
kcsie.lgfl.net



KCSIE 2025 (draft)

Remember: Currently, this is a for information only version. Further updates may still be made when the final version is published on 1st September.

- **Part 1 – NO CHANGES**
- **Part 2 – changes to:**
 - Alternative Provision
 - Artificial Intelligence
- **Suggests that updated RSHE guidance 'should' be published in Sept 2025**



Online Safety Additions

content: being exposed to illegal, inappropriate, or harmful content, for example: pornography, racism, misogyny, self-harm, suicide, anti-Semitism, radicalisation, extremism, misinformation, disinformation (including fake news) and conspiracy theories.

Para 135

- schools can use the department's 'plan technology for your school service' to self-assess against the filtering and monitoring standards and receive personalised recommendations on how to meet them.

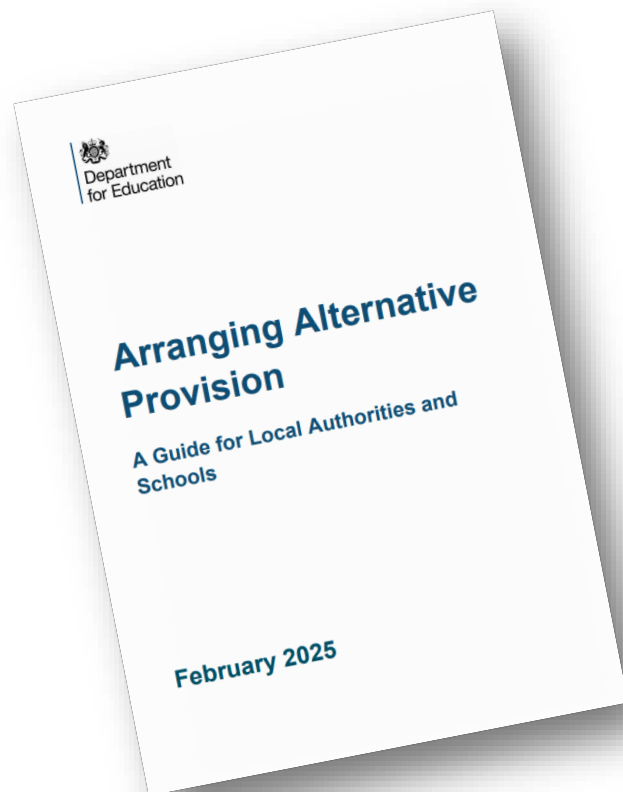
Para 142

- The Department has published Generative AI: product safety expectations to support schools to use generative artificial intelligence safely, and explains how filtering and monitoring requirements apply to the use of generative AI in education.

Para 143



Alternative Provision Additions



Now included in KCSIE



Alternative Provision

168. ...

169. The cohort of pupils in Alternative Provision often have complex needs, it is important that governing bodies and proprietors of these settings are aware of the additional risk of harm that their pupils may be vulnerable to. Schools should obtain written information from the alternative provider that appropriate safeguarding checks have been carried out on individuals working at their establishment (i.e. those checks that schools would otherwise perform on their own staff). This includes written confirmation that the alternative provider will inform the commissioning school of any arrangements that may put the child at risk (i.e. staff changes), so that the commissioning school can ensure itself that appropriate safeguarding checks have been carried out on new staff.

170. Schools should always know where a child is based during school hours. This includes having records of the address of the alternative provider and any subcontracted provision or satellite sites the child may attend. They should regularly review the alternative provision placements they make. Reviews should be frequent enough (at least half termly) to provide assurance that the child is regularly attending and the placement continues to be safe and meets the child's needs. Where safeguarding concerns arise, the placement should be immediately reviewed, and terminated, if necessary, unless or until those concerns have been satisfactorily addressed.



Other Additions

199. In September 2024, the role of Virtual School Heads was further extended to include a non-statutory responsibility to promote the educational achievement of all children in kinship care. Non-statutory guidance on [Promoting the education of children with a social worker](#) and children in kinship care arrangements contains further information on the roles and responsibilities of Virtual School Heads.

Centre of Expertise on Child Sexual Abuse has introduced new resources to help education professionals identify and respond to concerns of child sexual abuse and abusive behaviours.

Para 545

- The Lucy Faithfull Foundation in collaboration with the Home Office, has developed '[Shore Space](#)', an online resource which works to prevent harmful sexual behaviour. Shore Space offers a confidential chat service supporting young people who are concerned about their own or someone else's sexual thoughts and behaviour.

Annex B





What's not in KCSIE 2025?

- ✗ AI - <https://www.gov.uk/government/publications/generative-artificial-intelligence-in-education/generative-artificial-intelligence-ai-in-education>
- ✗ Online safety in relation to Online Safety Act
- ✗ Crime & Policing Bill
- ✗ Children's Wellbeing & Schools Bill
- ✗ Baroness Casy's report on group-based child sexual exploitation
- ✗ Relational Practice- from WTTSC
- ✗ Use of Reasonable Force update
- ✗ DSL role – Mandating supervision / professionalisation



What next for DSLs?

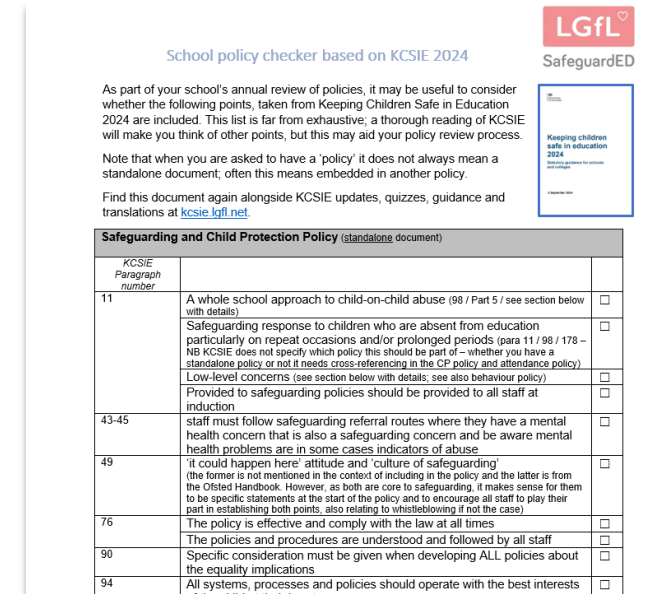
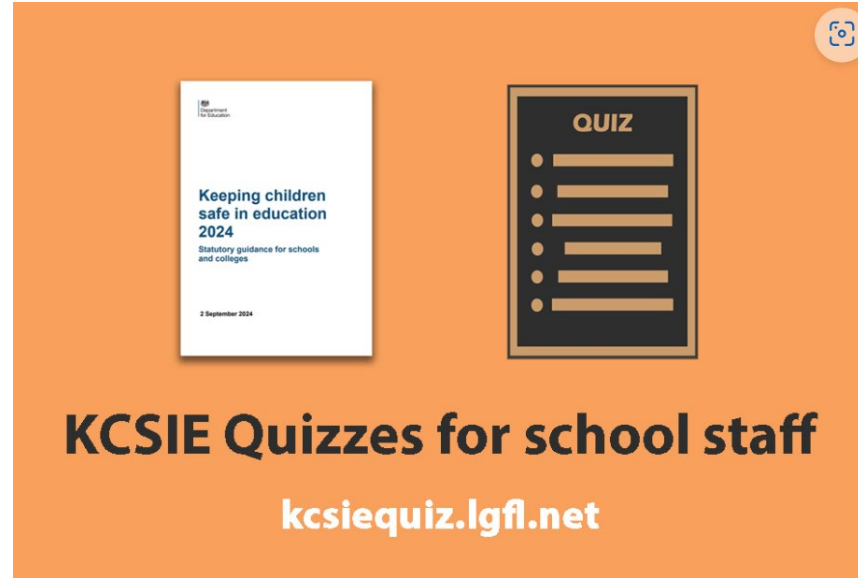
- 1 Update your OS policies/AUPs (safepolicies.lgfl.net)
- 2 Consider policy, approach, procedures for using AI in your school – both with pupils and for staff (genai.lgfl.net)
- 3 Consider policy and processes for your quality assurance of any Alternative Provision accessed by pupils
- 4 Reflect any changes in your staff training

BUT REMEMBER: There may be changes to the final published document on 1st September. We will update of materials to reflect any further changes.

kcsie.lgfl.net



KCSIE Support Translations and Quizzes



These will all be updated in early September to reflect
KCSIE 2025

[kcsietranslate/.lgfl.net](https://kcsietranslate.lgfl.net) / kcsiequiz.lgfl.net

kcsie.lgfl.net

