

**SAVE MORE THAN
YOU SPEND AND
KEEP CHILDREN SAFE**

with

LGfL 

THE NATIONAL GRID FOR LEARNING ®



020 8408 4455 . enquiries@lgfl.net . www.ngfl.net

LGfL is a registered charity; we don't profit from schools – we reinvest surpluses back into education.



Welcome to LGfL

Table of Contents

1. We'd love to work with you	Page 3
2. LGfL Let's Get Digital Broadband at a glance	Page 4
3. Free broadband with LGfL? Make it happen!	Page 5
4. Fend off cyberthreats with LGfL's 12 layers of security	Page 6
5. Claim your Pupil Premiums for free with LGfL	Page 7
6. Why LGfL is good for MATs and Local Authorities	Page 8
7. SmartBuy – Contract with confidence with LGfL	Page 9
8. Case studies and references	Page 10
9. Service specifications	Page 13

WE'D LOVE TO WORK WITH YOU

I am delighted that you are considering joining thousands of schools and millions of children who are part of the LGfL community.

LGfL is a unique, multi award winning Charity whose mission is the advancement of Education. We provide a fast and safe broadband service that delivers added value exceeding £50M per year through its "Let's Get Digital" bundle of free inclusions. This is why more than 95% of schools stay with us and why schools who left LGfL are now returning to our fabulous network of MATs, schools and teachers.

What can you expect?

■ **You will save thousands of pounds** by taking advantage of the bundle of brilliant products that are included with the service. You can make your broadband connection free by consuming some, or all, of the freely included packages that are bundled with broadband.

■ **You will benefit from enhanced protection from cyber threats** because LGfL includes up to 12 layers of security as part our package. That includes anti-virus, ransomware protection, shielding from DDoS attacks, spam protection, firewall protection as well as other protections.

■ **You will be in safe hands!** LGfL has one of the largest dedicated networks in the world for schools. LGfL already protects hundreds of thousands of devices, and millions of children, every day. LGfL has been delivering services successfully to schools for over 20 years.

■ **LGfL doesn't profit from schools.** As a Charity, we reinvest in the advancement of education. Over the last five years we have given away bandwidth upgrades to schools, added more free packages to our award-winning broadband service and increased our support for schools with free training and CPD. We constantly innovate and improve what we do.

■ **You will have access to a trusted service which delivers positive outcomes for children.** Just take our word for it! There are now over 100 video case studies and testimonials



from MATs, primary, secondary and special schools. LGfL has won multiple BETT and ERA awards for its partnership working with schools.

■ **You can buy with confidence. LGfL is a procurement compliant route.** As a Central Purchasing Body, LGfL does all the hard work of tendering and contract management for you. You can award contracts to LGfL in the knowledge that you are complying with the regulations. Even better, your school can benefit from the massive economies of scale we generate from purchasing on behalf of thousands of schools.

■ **Your transition to LGfL will be worry free.** We don't charge exorbitant set-up and installation charges. Our Easy Switch team will support you throughout the transition to LGfL at no additional cost! If there are delays to your new service LGfL will fund a contingency arrangement, until we can switch you over to our award-winning service.

JOHN JACKSON - CEO – LGfL

LGfL Broadband at a glance

- what is freely bundled

- KCSIE Compliant Web Filtering
- A Free School Meals Eligibility Checker
- Anti-virus software for end points and servers
- Ransomware Protection
- Remote Access
- Distributed Denial of Service (DDoS) Protection
- Malwarebytes Threat Prevention
- Email Spam Protection
- World Class CISCO Equipment (Router and Firewall)
- Meraki Mobile Device Manager (MDM)
- Encrypted Cloud Backup from Redstor
- Egress Encrypted Email
- Teacher Training
- Education Conferences
- Helpdesk and Online Support Desk
- All day, everyday network monitoring of performance and availability ■
- Over 100 Educational Packages Online (Including BusyThings and J2E) ■
- Access to Specialist Advice from Safeguarding, Wellbeing, Curriculum and SEND Teams
- A network of technical support spanning over 100 Companies who share LGfL's mission to advance education

■ AND LOTS MORE SEE SPECIFICATIONS FOR MORE DETAILS



Contact us enquiries@lgfl.net or phone 020 8408 4455

Make your broadband free with LGfL!

It's easy to make your LGfL broadband line pay for itself. All your school has to do is consume some or all of the bundled products that we include with our Let's Get Digital Broadband service. The bundle includes essentials such as anti-virus, ransomware protection, and our free school meals eligibility checker.

In many cases schools may be paying thousands of pounds for these essentials separately or, due to limited budgets, you may not have been able to afford them. That will all change if you join LGfL.

LGfL can provide these expensive packages for free with our broadband service because our aggregated buying power delivers huge economies of scale. As a charity, we don't seek to profit from our buying power. Instead, we pass these savings back to schools as free services or new innovations. **So act now...**

Next steps to take to unlock your savings

So, to unlock the thousands of pounds of savings available to your school, take the following steps:-

1. Make a note of how many servers and devices you have in the school. Don't worry if the numbers aren't exact. An approximation is fine.
2. Go to <https://savings.lgfl.net>
3. Press the button that says "Click here if you want to know what you can save with LGfL"
4. Select the type of school or establishment you represent from the drop down menu and add in the approximate number of servers and workstations.
5. At the bottom of the page click the button that says "Show How Much I can Save with LGfL Broadband"
6. You will then be presented with a summary of the savings. Press "Print Friendly Version" to print it out.
7. Share with others, such as your IT support team. If you haven't got an existing contract with the supplier for the licences, then all you need to do is request the licences and we can get you up and running in a couple of weeks or sooner. If you're already using the product then check when you can terminate your existing contract and then contact us to plan your migration.

Save more than you spend and keep children safe with LGfL Let's Get Digital Broadband!

Contact us enquiries@lgfl.net or phone 020 8408 4455

12 Layers of Cyber Defence for Your School – Included Free.

Hacking, cyber terrorism, ransomware and DDoS attacks, identity theft and phishing present a huge danger to your school. A successful attack can have dire consequences that ends up costing vast sums of money to fix whilst bringing terrible disruption to children's education. Even more worrying, the attacks and number of incidents are rising. In a world filled with cyberthreats and risks, LGfL has engineered its broadband for security as well as speed. We provide up to 12 layers of defence, and **we call this defensive line “CyberCloud”**. It is an unrivalled bundle that saves schools thousands and keeps you safe. So, what are the lines of defence that form CyberCloud?

All internet traffic (inbound and outbound) is scanned for threats such as viruses. If we have to go to the internet, we make sure that it's routed securely and the data is encrypted. Our monitoring includes technology that can spot cyber inbound and outbound threats such as Distributed Denial of Service (DDoS) attacks which can bring your school network down. DDoS isn't included in the broadband service by many providers for free, because it's expensive, so in most cases, this is an additional cost!

At the core of LGfL's broadband network is our investment in massive firewall capability spread over multiple datacentres. Think of a firewall as your internet border crossing checkpoint. Its job is to do all it can to make sure what comes in and out of LGfL broadband does not present a threat. Massive investment in these digital checkpoints enables LGfL to withstand attacks and prevent individual schools being overwhelmed. By being able to withstand attacks, LGfL and schools have more time to take steps to fend off threats and minimise potential disruption.

Behind our firewall checkpoints your school can freely access a range of protections that would ordinarily cost thousands of pounds. This includes antivirus software for the school and MAT. We provide malware threat protection, and we can scan inbound and outbound email for spam and viruses. Schools have access to ransomware protection. We provide Meraki Mobile Device Management to secure your devices and manage them remotely. You can even backup your servers to secure encrypted storage in the cloud so, if you're ever attacked, you can download your precious data and restore it in minutes without paying a ransom!

In your school we install an advanced firewall. This provides connection protection, both inbound and outbound. We invest in fantastic, market leading equipment to provide this on site safety.

Of course, not all security relies on clever technology and software. Overseeing the internet service is a Security Operations Centre (SOC) filled with security specialists who co-ordinate with LGfL and its partners to formulate an appropriate and prompt response to attacks. You can also test your staffs awareness of security by undertaking your own phishing tests for the school with software, bundled for free.

In 2022 we will extend our service offering to include vulnerability and security scanning so we can advise you, if you want us to, of the potential security risks that are identifiable. LGfL's 12+ layers of cyber defence, bundled free with our broadband, are market leading. LGfL CyberCloud is built for you, to defend you.

Contact us enquiries@lgfl.net or phone 020 8408 4455

Claim Your Pupil Premium for Free with LGfL



As part of the service LGfL supports over 1,000 schools to find additional funding to meet their budget challenges.

Our bundled Free School Meals Eligibility Checker enables schools to identify children that may be able to claim a Pupil Premium.

Depending upon local circumstances the level of funding identified for each school could amount to many thousands of pounds - a welcome support for the school during challenging times.

Given the above, it is no surprise that LGfL's Free School Meals Eligibility Checker is very popular and is in use in over 100 Local Authorities across the UK.

At the 31st March 2022, over £120M of potential additional funding for schools has been identified by LGfL's checker since the service started in 2014 and since September 2020 over £60M of potential Pupil Premium claims have been identified for LGfL schools.

A Free School Meals Eligibility Checker is often provided as a separately chargeable service for schools costing a substantial amount of money. For LGfL schools - it is free.

Find out more at fsm.lgfl.net or phone 020 8408 4455

Why LGfL is Good for MATs and Local Authorities

LGfL's subscription comes into its own when you purchase on behalf of multiple schools and this is why LGfL underpins many of the largest and most successful Multi Academy Trusts in the country.

Economies of Scale - If you're purchasing from LGfL on behalf of many schools then you will enjoy economies of scale and save more money.

Single Point of Management - Many of LGfL's bundled products can be managed in a central portal. This means that your MAT or Local Authority can allocate licences more flexibly across your school estate from a single control point, and this drives down your support costs.

Build & Customise Your Own Wide Area Network (WAN) - LGfL's Ignite Network can help your MAT and Local Authority avoid the prohibitive costs of building a private network with expensive WAN technology and point to point connections. You can build your own Datacentres and go to the Cloud harnessing features such as VRFs, MPLS and traffic engineering.

Support for your IT Strategy - For MATs and Local Authorities, LGfL provides targeted training and support to develop your IT Strategy to maximise the impact of technology in your schools.

Service Support & Management - For MATs and Local Authorities, we provide a Service Manager who is responsible ensuring that we are performing well and delivering a high-quality service to you.

Contact us enquiries@lgfl.net or phone 020 8408 4455

SmartBuy

Save yourself time and effort on procurement because we've done all the hard work for you!

Is purchasing from your existing broadband supplier compliant with Procurement Law? Do they buy on behalf of thousands of schools for the advancement of education?

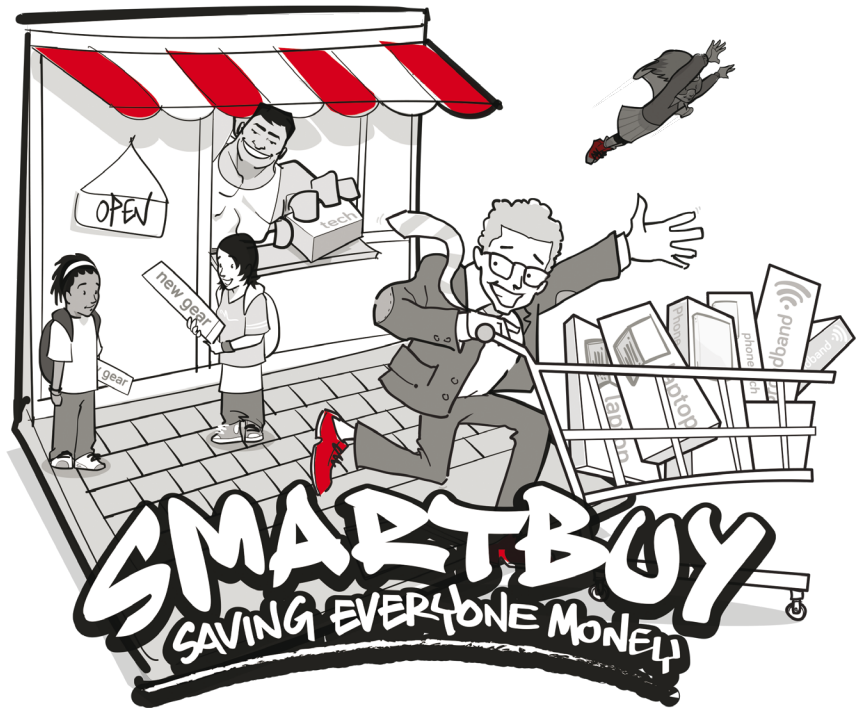
LGfL qualifies in Procurement Law to act as a "Central Purchasing Body" on behalf of schools and local authorities.

Therefore, the services and products schools purchase directly from LGfL have already been sourced in compliance with EU Procurement Law, this means that you can buy from us with confidence.

Schools also benefit from **best value** because we're tendering, and subsequently buying, on behalf of thousands of schools and public sector customers, saving them millions of pounds every year.

With our help you can avoid expensive, time-consuming tendering processes, and access the great services provided to over one million children and thousands of schools across the UK.

LGfL boasts both procurement compliancy and buying on behalf of thousands of schools, so why not join them and us?



Find out more at procurement.lgfl.net or phone 020 8408 4455



Explore
Daubeney Primary
Case Study video

SmartBuy

Save Time and Achieve More

Getting to grips with procurement can be a tricky part of a Business Management or Headteacher role. Deciphering the language, the acronyms, and the regulations around it all can be daunting and time-consuming.

Fortunately, LGfL's SmartBuy service and massive aggregated buying power can significantly drive down the cost of goods and services for schools, saving you thousands of pounds every year. As we are a Central Purchasing Body, schools, MATs and other public bodies (such as local authorities) can buy goods and services directly from us without the need to tender, saving both time and money.

Since 2001, we have saved schools more than £300 million by negotiating lower costs for safe and secure broadband. We also provide devices such as Chromebooks and Winbooks for underprivileged students, disaster recovery software, web filtering tools to keep children safe when learning remotely.

As Daubeney Primary School's Executive Headteacher says –

“ LGfL provides so much more than just a broadband service. Their ‘Let’s Get Digital’ value-added package provides many other services...if you were to procure these services individually with the respective companies it would amount to a lot of money and a lot of procurement hassle as well. If you do make use of all the services that LGfL will provide you’ll realise that the total combined savings will be greater than the price of the broadband itself. ”

Daubeney Primary is just one school that has benefitted from a subscription to our cost-effective broadband with its wide range of additional services, as detailed below:

Safeguarding:

Our safeguarding and online safety resources cover remote teaching and learning, and issues ranging from body image and bullying, to child exploitation and extremism. Users can select by audience type, topic, key stage or area of application. We also offer twice half-termly DSL training to keep your DSL's certification and knowledge up-to-date.

CyberSecurity:

Our web-filtering system was designed specifically for schools. Our resilient encrypted off-site storage management platform and software licences help protect your school against phishing, ransomware, and other malicious software. A Meraki MDM device management solution ensures you meet GDPR requirements through secure management and control of all school devices.

Learning:

Award-winning curriculum resources, browsable by subject or Key Stage, help teachers work effectively and innovatively, saving time spent preparing for lessons. Premium resources such as Busythings and Just2Easy will inspire your staff to achieve more in the classroom.

Inclusion:

An Inclusion Resource Centre packed full of resources to support learners with a broad range of special educational needs. Teachers can search by need – communication and interaction, sensory and/or physical, cognition and learning, social-emotional, mental health and well-being, and English as an Additional Language (EAL).

Training:

Online training can be found at training.lgfl.net, and CPD at safecpd.lgfl.net. We also offer in-school curriculum support, and a conference programme.



▲
Robin Warren,
Executive
Headteacher,
*Blossom Federation
of Schools*

We continue to improve and innovate on the SmartBuy services, so that all our LGfL schools and students can benefit from a more expansive bank of software, resources and training. As Daubeney Primary's Executive Headteacher says, our "driving force is school improvement and each school is in its own stage on that journey and it's a very rigorous process that's underpinned by the LGfL services that provide things like training development... as well as resources to underpin teaching and learning both in school and at home."

Jatin Shamji,
Federation Business
Manager,
*Blossom Federation
of Schools*
▼

Avoid expensive, time-consuming tendering processes, and access the great services already supporting over one million children and thousands of schools across the UK. Join LGfL today!



Why LGfL?

LGfL provides peace of mind delivering an unrivalled range of protections and safeguards that keep children safe and schools secure – all on top of superfast fibre and a lot more. This is how:-

■ LGfL is a charity. We don't profit from schools; we reinvest into education, constantly innovating and improving our service.

■ A secondary school can save more than £12,400 per annum and a primary school more than £6,900 by making use of LGfL's value added bundle – more at savings.lgfl.net.

■ LGfL now services more than 3,500 sites across the UK – we are now the **National Grid for Learning**.

■ LGfL's Free School Meal Checker has identified more than £120M of potential funding to schools between 2014 and 31st March 2022 – more at fsm.lgfl.net.

■ LGfL connects your school to one of the world's fastest school networks for cloud – more at pledge2020.lgfl.net.

■ LGfL safely and reliably connects many of the top teachers and schools in the world to the internet.

■ LGfL provides an unrivalled 12 layers of digital defence against security threats including ransomware, DDoS, and viruses – more at cybersecurity.lgfl.net.

■ LGfL safeguards over 1.2M children every day with one of the biggest implementations of educational filtering in the world – more at safeguarding.lgfl.net.

■ You don't have to tender. Schools can award contracts with confidence to LGfL, achieve VfM, and be procurement compliant – more at procurement.lgfl.net.

■ 98% of our customers stay with us for longer than their contract term, so we must be doing something right - more at testimonials.lgfl.net.

■ Schools say wonderful things about the LGfL service at testimonials.lgfl.net.

■ There are brilliant examples of how schools are harnessing LGfL at casestudies.lgfl.net.

■ LGfL has led some of the world's biggest EdTech projects for Cloud, security and content.

■ LGfL has won multiple industry awards for the services it provides - more at awards.lgfl.net.



So, what are you waiting for?



Service Specifications

LGfL – THE NATIONAL GRID FOR LEARNING

LGfL is different. We are a technology charity whose mission is the advancement of education. Our educational heritage means that LGfL deeply understands the needs of schools, MATs, and children. These needs guide us every day. LGfL's priorities are saving schools money, keeping children safe, energising teaching and learning, promoting wellbeing, and tackling inequality.



LGfL's charitable status means that we don't profit from schools. Instead, we invest our surpluses back into schools. The more that schools and MATs invest with us, we can invest in them. Therefore, LGfL is able to constantly improve the service at no additional cost to our customers. For example, we delivered FREE bandwidth and equipment upgrades to thousands of schools, MATs, and councils during the COVID-19 pandemic. Over the last five years, LGfL has relentlessly added new products and services to schools as it continues to expand nationally.

LGfL operates some of the largest deployments of educational technology, encompassing anti-virus, safeguarding solutions, secure networks, and educational content. Much of this brilliant technology is available through online cloud portals where your school or MAT can

control and administer the deployment of key technologies across its sites.

LGfL broadband extends to over 3,000 schools, libraries, community centres and youth centres across the UK. We call this service the National Grid for Learning, or NGfL. It is one of the largest and fastest dedicated school networks of its kind in the world.

LGfL buys on behalf of thousands of schools, saving them millions of pounds every year. As a result of our purchasing power, LGfL broadband offers the potential to save more than you spend on your broadband by taking advantage of the extensive bundle of essentials including filtering, anti-virus software and malware protection.

Other bundled essentials include a wide portfolio of free digital resources for safeguarding, security, curriculum



content and SEND and wellbeing. All these award-winning resources are available electronically via our website and resources portal. When you join LGfL, we'll also add you to our targeted newsletters and bulletins so that you can keep up with the latest developments.

LGfL broadband includes an extensive range of free training and development opportunities covering Google, Microsoft and Apple, as well as support for key specialisms such as Designated Safeguarding Lead training, inclusion and mental health and wellbeing. Ordinarily, you'd expect to pay for INSET and training, but not with LGfL!

LGfL's broadband includes access to LGfL's Free School Meal eligibility checker which has identified potential Pupil Premium funding in excess of £120M for eligible children between 2014 and 31st March 2022. Many non LGfL schools have to pay extra for this service.

Check just how much you can save with LGfL at <https://savings.lgfl.net>

LGfL is proud of its broadband service and the engineering excellence behind it. LGfL broadband is engineered for high speed and performance because LGfL broadband is built on fibre. We use equipment from one of the world's leading network providers, CISCO, to deliver reliability and high performance.

With LGfL broadband you receive exceptional levels of security and your school is protected by LGfL's 12 layer defensive shield "CyberCloud", which includes DDoS mitigation, ransomware protection and anti-virus protection. Our competitors will, usually, charge you more for these services.

LGfL broadband is built for reliability and high availability. Critical broadband services, such as web filtering, are spread over multiple datacentres to eliminate single points of failure. LGfL has multiple connections to the internet. Backup generators and Uninterruptible Power Supplies (UPSs) are installed in the network to reduce the risk of outages from loss of power. All of these steps mean less downtime and less disruption to your school.

As part of LGfL broadband, we include a number of private cloud services that support your school, MAT or council's vision for going serverless, including support for server hosting, co-location in ISO9001 datacentres, as well as access to our web hosting and caching service, designed for security and high availability.

LGfL broadband is accompanied by multi award winning support through TechSquad as well as support for teachers and schools through the Inspire Team.

In short, LGfL is an organisation you can trust. It has been providing services to thousands of schools for over 20 years. LGfL is an award-winning service and our retention rate is over 95%.



LGfL BROADBAND IN-DEPTH

Access to a broadband service that is predominantly built on fibre, the fastest way to access the internet.

- Broadband that delivers speeds from 50 Mbps up to 100Gbps so we can cater for all needs and budget.
- The provision of brilliant equipment that is future proofed, wherever possible, to enable LGfL to increase capacity and features “over the wire”, which minimises disruption and cost to your school.
- In the vast majority of cases LGfL delivers your connectivity over a symmetrical fibre connection (a “leased line”) where the upload and download speeds are identical. This means that the school has capacity that is DOUBLE the stated broadband line speed. This ensures the school can cope with peaks in demand during particular times of the day.
- A commitment to avoid, wherever possible, the need to change the school’s IP address ranges when transitioning to LGfL from your existing broadband provider as part of our EasySwitch Service.
- A broadband service that is monitored for security threats and availability, 24 hours a day, 7 days a week.
- High availability DNS and secure services to support continuous access to internet services and potentially save your school money.
- Access to “Quality-of-Service” should you need to prioritise network traffic to meet needs such as time critical network packet delivery needed for digital voice services.
- MPLS/VRF networking means that you have security and flexibility engineered into your broadband connection.
- Access to a National VPN which means that your school data is carried in an encrypted path in the network, which keeps your data safe.
- Access to a team that can support your school to design and build your own private Wide Area Network to support secure access to shared facilities including, for example, a datacentre.
- Access to Govroam, which enables your school to integrate with public sector networks used by central and local government.

- Access to EduRoam is available, to link your Wi-Fi network to the wider education community.
- The provision of free public IP addresses to support your needs.
- The provision of free internal IP ranges to enable the school and devices to be connected appropriately and flexibly to the internet. Generally primary schools will have a /21 range and secondary schools a /22 range, but this can be flexed and changed to meet the needs of the school.
- Support for Network Address Translation (NAT) where required to support local network and security requirements.

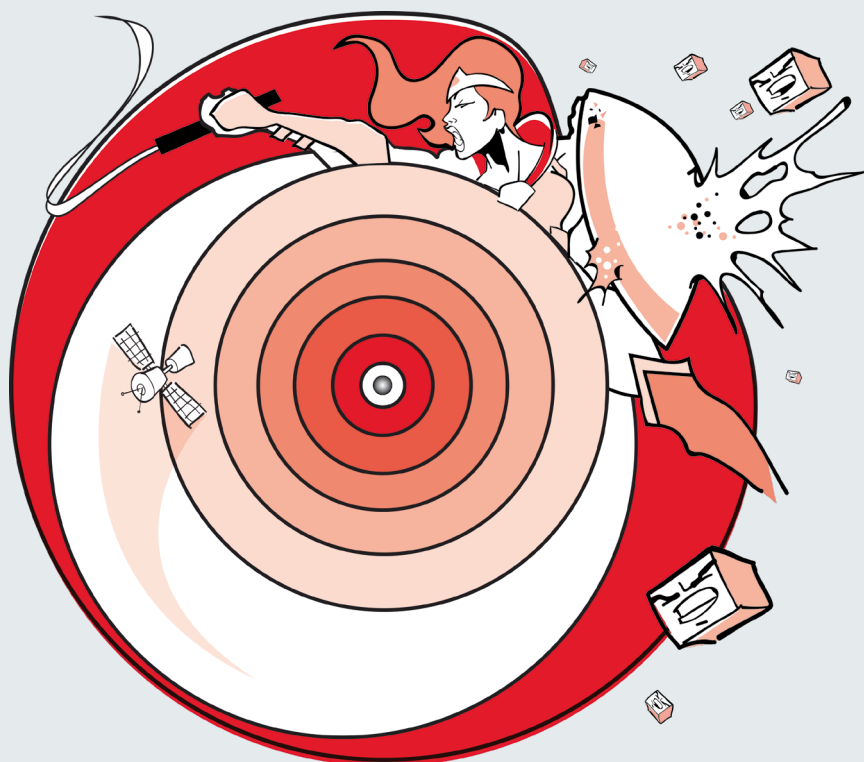
HARNESSING CLOUD

As part of LGfL broadband we provide additional cloud support services which can save your school money. Those features include:-

- Free website hosting (via WordPress), which benefits from being monitored 24 hours a day and is actively security patched to minimise the risk of the school’s site being compromised.
- Free website caching service to support the webhosting service which has been designed to improve the performance of your website.
- Free help with Google and Office 365 transition to the Cloud, including advice and signposting to key resources.
- Free online Google training, delivered by experts, which is invaluable to schools seeking to make the most of platforms, such as Google Workspace.
- Free online Office 365 training, which is also delivered by experts and provides invaluable advice and support for schools seeking to harness the potential of Office 365.
- Free access to online J2e and BusyThings training, which is also delivered by experts and provides invaluable advice and support for schools seeking to harness the potential of these highly engaging cross-curricular learning services and content creation tools.

KEEPING SCHOOLS SECURE – CYBERCLOUD

Security is a fundamental part of LGfL broadband. LGfL's broadband is unique as it offers over 12 layers of defence against cyber threats and security risks. **We call this part of the LGfL broadband service CyberCloud.** CyberCloud is supported by a team of experts in a Cybersecurity Centre of Excellence.



LGfL holds Cyber Essentials Plus accreditation, which means we're trusted to provide secure services.

LGfL datacentres are managed to ISO9001 standards. The CyberCloud Team has a national reputation and has partnered with agencies, such as the National Cyber Security Centre (NCSC) to undertake ground breaking research on the state of cybersecurity in schools. As part of LGfL broadband, the CyberCloud Team review, design, procure, and implement the most secure platforms, and this enables LGfL to keep schools safe.

LGfL doesn't just provide protection whilst you are in school. We also believe it's important to extend those protections to the home and remote locations. LGfL provides Sophos Home Commercial Edition that can be used by governors, parents and teachers at home. LGfL also provides

a secure remote access service using the latest VPN and encryption technology as well as filtering at home.

Key elements of CyberCloud include protections against ransomware, DDoS attacks, phishing, spam, malware and rootkits. The LGfL network includes state of the art firewall protection that is designed to block unauthorised access to your data and school systems. LGfL broadband schools have Meraki Systems Manager licences to centrally manage installs and avoid the unauthorised software that often leads to malware. LGfL CyberCloud includes a Security Operations Centre (SOC) which monitors security threats and, when they are identified, works with LGfL and partners to remediate threats to schools.

As part of CyberCloud LGfL provides a rich range of online resources, including the Elevate toolkit, which



provides extensive security related resources and advice to help schools develop effective plans to mitigate risk and security threats.

The CyberCloud Team produce a regular newsletter and have put together a wide range of electronic resources to support technical contacts and keep members of the School Leadership Team abreast of developments.

For more information about LGfL's cyber defences please go to cybersecurity.lgfl.net

CYBERCLOUD IN-DEPTH

■ DDoS Protection for your school or MAT, which includes daily network scanning and defence against attack. It is particularly important to block DDoS threats as they can overwhelm your internet and school connection, effectively bringing your school network to a halt and negatively affecting learning.

■ Access to a free encrypted backup storage and Disaster Recovery software ("GridStore") that enables a fast recovery from a serious incident or loss of infrastructure. Many schools have used LGfL's encrypted storage enabling them to recover their systems and data within a matter of hours rather than the days or weeks it could typically otherwise take.

■ The provision of onsite firewalls from one of the world's leading network companies. LGfL monitors these firewalls centrally on your behalf, enabling problems to be identified to schools proactively. Today, our management systems are so sophisticated that we are even alerting schools that firewalls are overheating so they can be moved to a cooler location to avoid them breaking down!

■ A secure Remote Access Service which enables access to resources held on your school network such as your MIS package or confidential information held in shared folders on a local server

■ Access to Sophos Intercept X Advance for Servers. This package provides extremely high levels of security that keeps critical servers protected from being compromised or hacked.

■ Access to Sophos Intercept X for End Points protects laptops, desktops and other devices from malicious ransomware attacks. LGfL makes it possible for this service (along with other Sophos products) to be administered centrally by the school, MAT, or trusted educational provider.

■ Access to Sophos disk encryption services to keep your sensitive data, located on devices and servers, safe at all times. As with other Sophos products, disk encryption can be managed centrally through your school, MAT, or partner Sophos portal.

■ Access to Sophos Phish, which is a training package that can be used by the school or MAT to check whether staff can recognise potentially harmful emails.

■ Access to Malwarebytes, a package that monitors your devices for dangerous software, alerts you to its presence, and provides technology to remove the threat. LGfL makes it possible for this service to be administered centrally by the school, MAT, or trusted educational provider.

■ Access to CISCO Meraki Systems Management. Meraki enables your school or MAT to manage your IT assets centrally, via a portal, and apply security policies such as the remote deletion of information on lost devices. LGfL successfully used Meraki to identify devices that had the WannaCry vulnerability and then fixed it. As a result, LGfL schools were not impacted in the same way as other organisations such as the NHS. LGfL makes it possible for Meraki to be administered centrally by the school, MAT or trusted educational provider.

■ Access to email scanning and spam protection to strip out viruses attached to email and to block spam. The system currently scans up to three million emails a day, making it one of the largest single deployments of its kind in the world.

■ Protection from CISCO firewalls at the core of the LGfL network, supplemented by additional firewalls that are installed in your school. This "double" firewalling provides maximum protection for schools.

■ Comfort from knowing there is everyday, round the clock monitoring of network availability, as well as scanning for potential threats. Often faults are identified out of hours and because of our constant monitoring of services, LGfL along with its partners, is able to commence resolution of problems that arise out of hours and fix them, where possible.

■ Access to Unified Sign On (USO), which provides secure and authenticated access to the LGfL network and your school.

■ Provision of 2 Factor Authentication (OTP), which delivers an added level of security when accessing



information remotely.

■ Access to a network vulnerability scanning service to identify potential security gaps and risks in the school network (available on request). The service will be enhanced soon to provide a rating of how well protected your school is and how well your security defences are bearing up over time so you can track your progress and take steps to deliver improvements.

■ Access to cybersecurity subject matters experts who can advise on the latest policies and best practices.

■ Access to a regular Cybersecurity newsletter and blog aimed at school cybersecurity leads and staff involved in managing and mitigating security risks within the school and MAT.

■ Access to template policies and plans that can help you manage your security response. These resources can be found in the Elevate Cybersecurity Toolkit for Schools which is something that we make freely available to all schools.

■ Access to NCSC Cyber Security Training for Schools so you can develop your staff and build your knowledge of best practices.

KEEPING CHILDREN SAFE – DIGISAFE

LGfL broadband includes safeguarding protection both in schools and at home. **We call this key part of the LGfL broadband service DigiSafe.** Our solutions are supported by a team of subject matter experts who form our Safeguarding Centre of Excellence (the “DigiSafe Team”).



Safeguarding is in LGfL’s DNA and is at the heart of all we do. Our services range from technology to policies and training and far beyond, helping schools make sure that keeping children safe is not just a tick box exercise, but embedded in all they do. Our technology experts build best-of breed schoolsafe systems you won’t find elsewhere, such as our web filter, which handles over one billion websites every day.

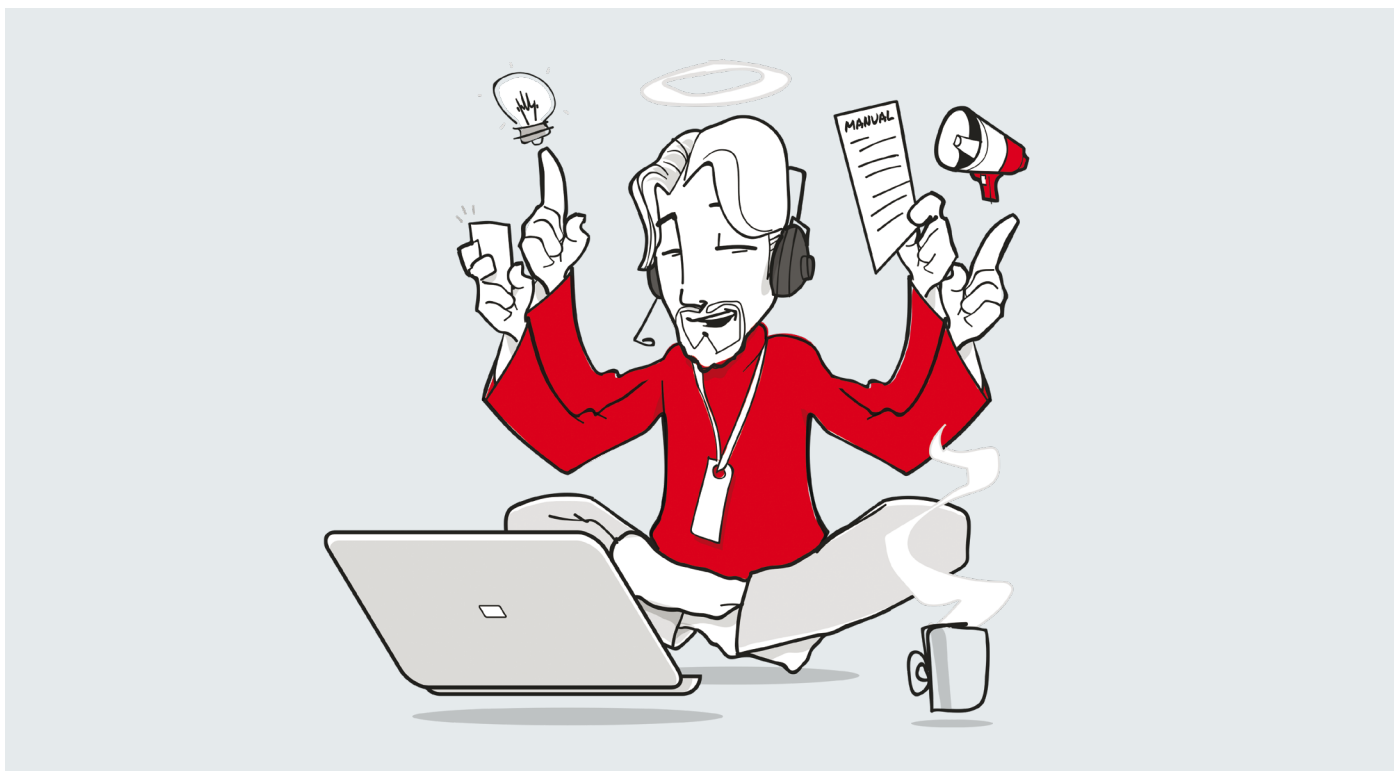
But that’s just the start – whether it’s getting to grips with the Prevent Duty or Keeping Children Safe in Education, training your safeguarding team or all-staff CPD, providing resources for the classroom or helping schools with best practice, training and guidance, providing policies from our national work or supporting work with parents, we help schools with every part of the safeguarding jigsaw. Find out more at safeguarding.lgfl.net.

DIGISAFE IN-DEPTH

- Sophisticated, schoolsafe, fully compliant web filtering (compliant as per KCSIE)
- Access to experts for the latest safeguarding advice and best practice
- Unique blend of online safeguarding and traditional child protection approaches
- Filtering for school devices in the home to support remote learning
- Specialist advice on safeguarding issues
- Curriculum advice for safeguarding in the RSHE curriculum
- Guidance on technology use in the classroom and remote teaching best practice
- Safeguarding newsletter and blog
- Policy templates and Acceptable Use Policies (AUPs)
- Live training sessions for safeguarding teams, technicians and all staff
- Formal Designated Safeguarding Lead training
- One-stop Safeguarding Resource Portal
- Self-service online CPD resources
- Classroom resources to keep children safe
- Parent safeguarding portal
- Research, partnerships and training in specialist areas
- Posters to support key messages in school

TECHSQUAD – LGfL’s HELPDESK AND SUPPORT SERVICE

LGfL believes that you deserve great technical support to ensure you make the most of the fantastic resources available to you. **We call this part of the LGfL broadband service - TechSquad and Concierge.**



LGfL’s broadband support is an award-winning service that has twice been named the ERA Not for Profit Supplier of the Year to the Education Sector, and has been voted an EdTech Top 50 “Mover and Shaker”.

TechSquad support starts with our EasySwitch service which supports your school’s transition from your existing provider to LGfL, as painlessly as possible. As part of the EasySwitch service we allocate a Customer Success Manager to provide tailored support and advice for your school to ensure you make as much use of the available resources as possible.

Once connected to LGfL our Service Management team will look after you to ensure your service runs smoothly. The support package for your school includes an online portal where you can track your school’s technical and configuration information, log support calls, request information and find out about the latest developments. The

school can also check important matters such as the speed of connection, how much bandwidth is being used, and what the firewall configuration includes.

When you have a problem, or a request for advice, you can contact LGfL in a number of ways. We provide a telephone support service, as part of a Helpdesk, to answer calls and resolve problems as soon as possible. A very high percentage of these calls are resolved at the first point of contact. LGfL provides access to an online call tracking and case management system where updates to calls and requests can be tracked. In times of emergency we also provide a text service to ensure that updates and changes are sent through, even when your internet connection may be down.

We also understand the importance of providing great support to your IT team or local provider. This is why LGfL has established a Digital Transformation Partnership with around



100 IT companies who work with LGfL to accelerate digital innovation into schools. These companies are knowledgeable about the LGfL package and can help your school make the most of its connection. We make sure our DTP partners stay up to date with regular training and development events.

LGfL's connection includes around the clock monitoring of the network for faults and potential matters of concern through National Operational Centres (NOCs).

LGfL has important partnerships with a range of global companies including Sophos, Google, Malwarebytes, Egress, and Microsoft, as well as leading providers such as Busythings and J2e.

Concierge is a recently launched service from LGfL which is designed to provide you with a truly personalised and bespoke support package for your school and MAT. Concierge will allow the school to opt into out of hours support as well as access a personalised support team, to help you make best use of your broadband service.

Find out more about who partners with LGfL at

dtp.lgfl.net

TECHSQUAD IN-DEPTH

- Access to a UK based helpdesk providing 1st, 2nd and 3rd line support that resolves the overwhelming majority of support calls and service requests at the first point of contact.
- Access to the LGfL EasySwitch service which has been designed to advise and support a transition to LGfL from your existing broadband provider. This includes help with setting up the filtering service, advising on firewall configuration, IP addressing schemes, VoIP integration as well as advice on how to make the most of LGfL's freely included services.
- Access to a Customer Success Manager to help you make the most of your LGfL broadband, including how to access the free products and content bundled with your connection.
- Access to LGfL Concierge. This is a service designed to help your school and MAT make the most of the LGfL packages and services.
- Comfort from knowing that a National Operations

Centre (NOC) monitors the LGfL broadband line around the clock and will take proactive steps when a broadband line indicates a fault or an exception condition. This network monitoring includes device availability, bandwidth utilisation, jitter, packet loss and latency.

■ Comfort from knowing that a Security Operations Centre (SOC) monitors the LGfL internet connection for inbound and outbound security threats. Security monitoring includes virus signatures, ransomware signatures, DDoS attacks, malware, rootkits and other resources.

■ Access to national engineering support and cover, which is vital to minimise downtime and disruption, which may occasionally happen.

■ Replacement of faulty or broken routers or firewalls at no additional cost.

■ Access to a self-service portal (the "Support Site") providing full information about your LGfL Broadband including fault tracking, availability statistics and technical information, including firewall and network connection configuration.

■ Access to an online case management system to track the progress of your service requests and incidents. Where required, the online case management system can be configured to provide a MAT level view of how services are being configured across multiple sites, making day to day administration more efficient and simpler to manage.

■ Self-service access to network performance analytics and information that can provide invaluable insights as to how much you're using your LGfL resources.

■ Access to an online support portal providing access to a knowledge base including videos and technical advice.

■ Automatic enrolment in a Text Alerting Service, which will inform your schools of major outages, and progress updates and their resolution.

■ The comfort from knowing your services is covered by a comprehensive SLA covering installation and ongoing support.

INSPIRE AND ENERGISE – HELPING TEACHERS MAKE THE MOST OF DIGITAL INNOVATION

LGfL broadband extends well beyond the range of fantastic hardware, software and network features outlined above. As part of the broadband “Let’s Get Digital” service, LGfL provide access to award winning curriculum content and CPD opportunities at NO ADDITIONAL cost. **We refer to these services as Inspire (support for CPD and teachers) and Energise (the creation, curation and dissemination of brilliant digital content).**

For teachers, the LGfL Inspire focus is;

- Offering a fantastic range of free online CPD opportunities
- Supporting evidence based learning
- Helping reduce teacher workload by providing high quality comprehensive curriculum linked learning resources

LGfL focuses on promoting student responsibility too, as part of the Inspire service, through;

- Differentiation
- Engaging reluctant readers
- Inspiring and promoting student voices
- Providing equality of opportunity for all learners

The LGfL Inspire service is delivered by experienced teachers and senior leaders with a wide range of specialisms to help schools maximise online technologies and learning resources. The Inspire team has MAT experience and Cyber Security Expertise and can offer guidance and advice on how to maximise the use of LGfL learning content as well as support with curriculum mapping, cloud platform support, device advice and much more.

The Inspire team played a key role in the delivery of training and supporting schools move to online, remote learning as part of the DfE sponsored National Ed Tech Demonstrator Programme.

The Inspire team continues to pioneer new technologies, including the use of Augmented and Virtual Reality into everyday teaching and learning as well as enabling the integration of online platforms. Many in-house produced learning resources feature experts in their field showing



artefacts from sites and locations that children might never visit in person.

There is also support for a comprehensive programme of CPD opportunities provided within your subscription

Free bespoke school support, varied training opportunities and conferences are integral parts of the LGfL Inspire service provided at no extra charge for schools.

Find out more at training.lgfl.net

As part of Inspire, LGfL has provided free access to a number of major conferences each year, covering the curriculum, technical support and safeguarding. These are typically attended by hundreds of schools and attract some of the biggest names in teaching and learning today.

Complementing the Inspire service is our award winning



Energise curriculum content which provides a wide range of award-winning online curriculum learning resources across all key stages, for use anytime and anywhere.

LGfL's unique charitable status and educational expertise helps it to reach places other providers can't! Whether filming in parts of royal palaces never before seen by the public, or accessing the vaults of major museums, or filming experts on locations across the UK and Europe, LGfL digital collections are unrivalled in terms of quality and uniqueness. Add to this some of the UK's finest educational experts, who give resources the required curriculum wrap – with guaranteed relevance and reach – and you start to understand what is different about internal LGfL content.

Our premium resources are only accessible if your school is subscribed to our Let's Get Digital broadband service.

Two of our key resources are Busy Things and J2e. Both are award winning learning platforms offering a comprehensive collection of interactive games, activities, and are filled with creative tools for use across the curriculum.

Find out more at content.lgfl.net

ENERGISE IN-DEPTH

■ Access to J2e across the whole school, this is an award winning primary learning platform, filled with creative tools for use across the curriculum. A complete remote learning solution for your school with tools, apps and games, for maths, english, computing and cross curricular activities. Easy sign-in for pupils and teachers with guided lesson plans included. Loved and trusted by thousands of schools. Visit just2easy.com to learn more.

■ Access to BusyThings; a comprehensive collection of interactive games and activities, learning tools, and engaging primary school resources to help you breathe life into the curriculum! There's an exciting resource to help you teach every subject, including English and literacy, phonics, maths, science, history, geography, art and music. From Early Years right through Key Stage 1 and 2, the children will be

highly engaged. Visit busythings.co.uk to find out more.

■ Access to Discovery Education's latest Immersive Technology Sandbox Augmented Reality (AR) platform for iPad, a new global Augmented Reality app enabling children to engage and visualise history in new and stimulating ways. Well received resources include Ancient Egypt, Maya, Romans and Greece. Visit immersion.lgfl.net for more details.

■ Access to a bank of high-resolution images (Image Bank) from the cultural sector, including the Royal Collection, which can be used by schools for assignments and key elements of the National Curriculum.

■ We also produce internally made resources, and others made in partnership with charities or museums and their experts. See examples below:

■ Childbereavement.lgfl.net (was a nomination for a BETT award)

■ RZL.lgfl.net (won a BETT collaboration award 2021)

■ Computing.lgfl.net

■ Grammar.lgfl.net (to support parents)

INSPIRE IN-DEPTH

■ Free tickets for the Annual Curriculum Conference where you can network with like-minded colleagues.

■ Access to a regular Curriculum Newsletter (newsletter.lgfl.net) and Curriculum Blogs (curriculumblog.lgfl.net) aimed at supporting teachers and senior leaders in the school.

■ Access to a team of education professionals experienced in helping teachers harness the power of technology to help all learners achieve their potential. CPD is available to help schools make the most of LGfL's resources (training.lgfl.net)

■ Opportunities to participate in pilot projects to explore the latest education technology opportunities such as Sandbox AR

■ Access to expert support portals sharing good practice and case studies showing how other schools have succeeded (casestudies.lgfl.net)

■ Training event recordings are made available for flexible and convenient 'ReWatch' to support busy teachers in their CPD development

INCLUDED – SUPPORTING INCLUSION, EAL AND MENTAL HEALTH AND WELLBEING

LGfL broadband includes support for SEND, EAL pupils and wellbeing.

We call this part of the LGfL broadband service IncludedED.

IncludED focuses on helping schools in three key areas; supporting those with special educational needs or disabilities (SEND); supporting those who have English as an additional language (EAL); and promoting wellbeing and supporting positive mental health for all in school communities.

IncludED offers free high-quality training, access to learning resources which support inclusion for all as well as advice for schools on inclusion and wellbeing best practice and building a strong community of schools, charities and others to share best practice.

Examples are;

- included-in-your-classroom.lgfl.net
- healthyminds.lgfl.net, and wbc.lgfl.org.uk
- EAL Resources: yis.lgfl.net eal.lgfl.net

The IncludED team can also provide advice about how to get the most out of online platforms and your existing technology to support accessibility and inclusion to your curriculum.

www.ipad.lgfl.net

<https://youtu.be/Nkkp4edCBEo>

Find out more at included.lgfl.net, and for wellbeing resources visit mhwblgfl.net

INCLUDED IN-DEPTH

- Tickets for the annual SEND, Inclusion and Wellbeing Conference which showcases new thinking, resources and best practices in all key stages.
- Online training courses to support your school context.
- SEND/Inclusion advisory service to provide advice and signpost to relevant resources and information.
- Access to a database of 1200+ Widgit Symbols, updated in 2022.



LGfL “ONE STOP” ADDITIONAL SERVICE OPTIONS

LGfL recognises that increasingly schools and MATs want a “one stop shop” for their technology needs. LGfL has, therefore, extended the range of offerings to include a number of additional services that offer fantastic value for money.



LGfL VOICE

LGfL provides voice services, through its partners, to hundreds of schools. Those services are based on Voice over IP and can help schools reduce their phone bills and move away from being dependent on older telephone exchanges. LGfL's Voice has been customised to deliver additional features, including safeguarding protection.

LOW-COST DEVICES - BRIDGETHEDIVIDE

LGfL provides low cost, high quality devices to schools at fantastic prices. **We call this service - BridgeTheDivide.**

See our current range of devices and find out more at devices.lgfl.net

During the COVID-19 pandemic, LGfL recognised there was a huge crisis facing schools due to the lack of access to laptops and equipment. To support schools, LGfL set up a national programme called Bridge the Divide. This initiative sought to purchase up to one million devices for schools. By procuring devices at a massive scale, LGfL saved schools millions of pounds and increased access to devices and technology for children, including the most disadvantaged. Over 200,000 devices were subsequently purchased or recycled to schools as part of BridgeTheDivide.

The success of the programme has been welcomed by schools, and LGfL will continue to provide schools with access to equipment at fantastic prices.



LIMITLESS – UNLIMITED MOBILE AND VOICE SIMS

Mobile communications will play a critical role in the future of technology provision in schools. LGfL believes mobile voice and data services should be provided at the lowest cost, and schools should not have to worry about unexpected charges.

For further details or to request a quote visit mobiledata.lgfl.net.

LGfL Limitless is a new service that is being developed to help schools harness high speed, wire free connections, with no small print or throttling of speeds.

As there are no hidden data charges, billing is simple, and the SIM cards can be used with your existing equipment and phones, provided they are not locked to a particular network.

RESILIENT CONNECTIONS

As schools move to the Cloud, and become increasingly dependent on the internet connection for everything from payments to security camera, the need for cost effective backup connections is now a key consideration. LGfL offers a range of options for schools to fit all budgets and requirements.

Bronze resilience for fibre with a backup copper line which is usually FTTC or 4G/5G, running at speeds of up to 300 Mbps

Silver resilience delivered via new fibre to the school, terminating on the router at speeds of up to 1 Gbps

Gold resilience delivered via new fibre to the school, terminating on a separate firewall and router delivered at speeds of up to 1 Gbps

Platinum resilience delivered via a diversely routed fibre, terminating on a separate router and firewall with speeds up to 10Gbps

OUT OF HOURS SUPPORT

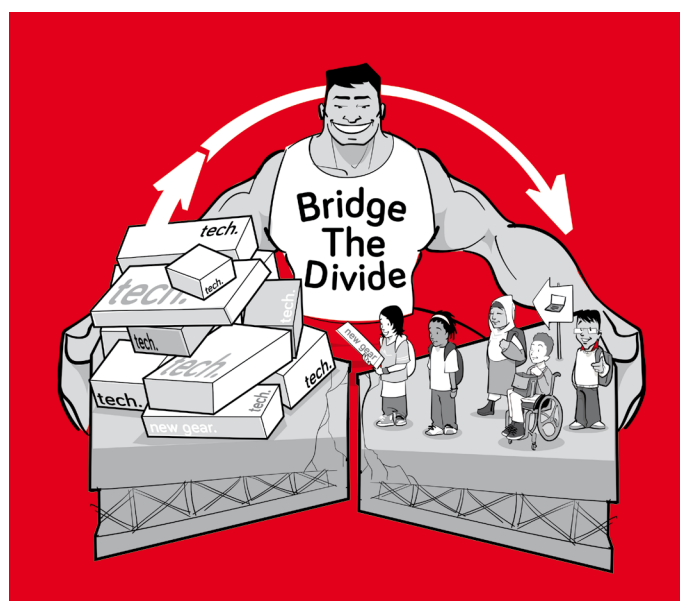
Many schools and MATs cannot afford to lose access to the internet out of hours and at the weekend due to the demands placed on their school. LGfL now provides that insurance for schools seeking additional peace of mind. Pricing and options are available on request.

DATACENTRE HOSTING

LGfL has located its services in secure, ISO9001 accredited datacentres. For those schools seeking to go serverless, this is an invaluable option to move your servers to, and removes the complex headache of managing and overseeing a datacentre environment. Options and prices are available on request.

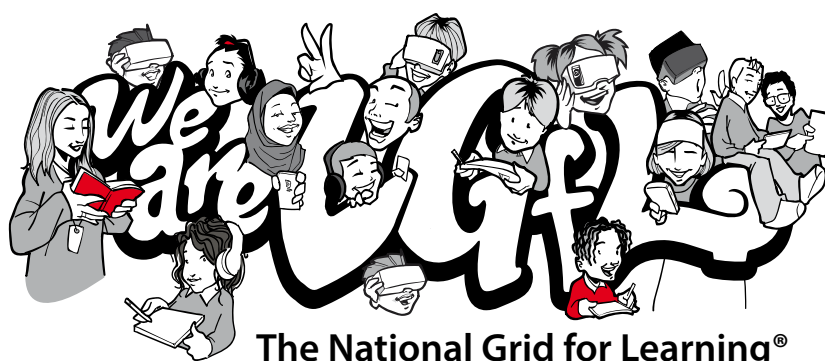
LGfL WIFI

LGfL WiFi Service which enables the publication of SSIDs across MATs, councils and geographical areas, creating hotspots for secure access to resources for those members of staff needing to work across multiple sites.



LGfL Contacts and Support

Phone us: **020 8408 4455**



The National Grid for Learning®

Find how much you can save and benefit at
savings.lgfl.net

Find out about LGfL Services at:
services.lgfl.net

Find out about safeguarding at:
safeguarding.lgfl.net

Fantastic curriculum resources at:
content.lgfl.net

Meet the LGfL Team:
meetus.lgfl.net

We are procurement compliant:
procurement.lgfl.net

Visit our website:
www.ngfl.net



What schools think about LGfL:
testimonials.lgfl.net

Contact us by email:
enquiries@lgfl.net